

## BELZONA IN-SITU REBUILD OF DECK WINCH

### CUSTOMER

Liquefied Natural Gas Carrier, France

### APPLICATION DATE

1997

### APPLICATION SITUATION

Shaft of deck winch

### PROBLEM

Wear on shaft in way of cable drum

### PRODUCTS

Belzona® 1131 (Bearing Metal)

### SUBSTRATE

Steel

### APPLICATION METHOD

Application was carried out in accordance with Belzona Know-How System Leaflet MPT-1. Portable lathe was used to machine shaft in place without removing or complete dismantling.

### BELZONA FACTS

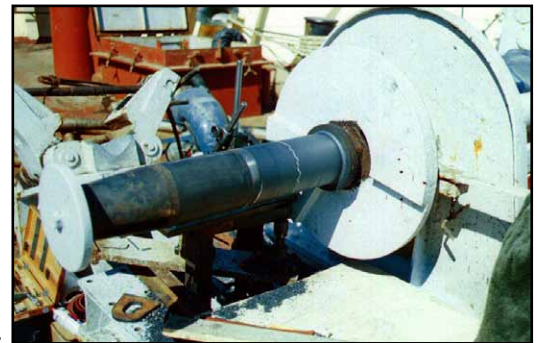
Belzona® application safe and easy to carry out in-situ

### PICTURES

1. Belzona® 1131 being applied to the prepared shaft
2. In-situ machining of the Belzona® 1131 being carried out
3. The completed application



1.



2.



3.

For more examples of *Belzona Know-How In Action*, please visit <http://khia.belzona.com>



ISO 9001:2008  
Q 09335  
ISO 14001:2004  
EMS 509612

Belzona products are  
manufactured under an ISO  
9000 Registered Quality  
Management System.

UK • USA • Canada • China  
[www.belzona.com](http://www.belzona.com)

  
**BELZONA®**  
Repair • Protect • Improve